

# Move in AT ESSENCE


FIRST HOME  
OWNERS PAY  
**\$289,000**



HOUSE & LAND

ESSENCE BACCHUS MARSH

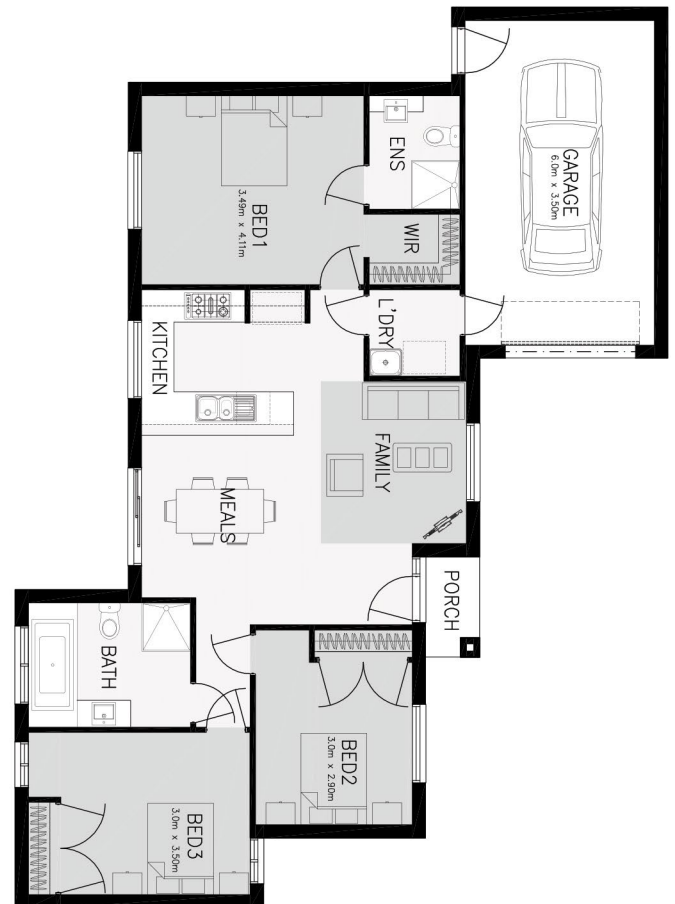
## \$299,000

UNIT 3  
17 Sweet Avenue, Maddingley  
3  2  1 

Great value 3 bedroom home, fixed price with complete inclusions and no progress payments.

- ▶ Full turn-key inclusions with no progress payments
- ▶ 25 year structural guarantee
- ▶ 2590mm high ceilings to ground floor
- ▶ 900mm Blanco European Stainless Steel Appliances
- ▶ Carpets and tiles throughout
- ▶ Downlights to main living areas
- ▶ Panel lift Colorbond garage door with 3 remote controls
- ▶ Designer facade as depicted
- ▶ 3 coat Dulux paint system
- ▶ Blinds and flyscreens to all openable windows
- ▶ Full front and rear landscaping
- ▶ Coloured concrete driveway
- ▶ Fencing to all boundaries
- ▶ Fixed Site costs

All images are artist impression only, furniture and some fixtures and fittings are not included. Price is correct at time of publication and is subject to change without notice.



CALL NICK ANAGNOSTOU AT ESSENCE OFFICE 1300 995 273